



ISSN: 0067-2904

## Comparison of LAMP and PCR for the Diagnosis of Methicillin-Resistance *Staphylococcus Aureus* (MRSA) Isolated from Different Food Sources

Sundus Ali Jassim<sup>1</sup>, Nuha Kandala<sup>2</sup>, Saad Sabah Fakhry<sup>1</sup>

<sup>1</sup>Food Contamination Researches Center, Ministry of Science & Technology, Baghdad, Iraq

<sup>2</sup>Department of Biotechnology, College of Science, University of Baghdad, Baghdad, Iraq

Received: 24/5/2020

Accepted: 11/7/2020

### Abstract

*Staphylococcus aureus*, which includes the methicillin-resistant *S. aureus* (MRSA), is a significant human pathogen producing different toxins and results in many different infection types, which include bacteremia, soft-tissue infections, as well as staphylococcal food poisoning. *S. aureus* is an important food-borne pathogen of humans due to ingestion of food containing enterotoxigenic strains. Detecting *S. aureus femA* and *mecA* genes was evaluated with the use of a Loop-mediated Isothermal Amplification Method (LAMP). The accuracy of this approach was similar to that attained using the approach of the conventional polymerase chain (PCR). Those two methods characterized 43 isolates of MRSA which were separated from different samples of foods and were not detected in the two other non-*Staphylococcus* strains (standard strains). The optimal temperature for the LAMP assay was 65°C, with a detection limit of 2.5ng/μL and 10<sup>3</sup>cfu/ml, when compared to 12.5 ng/μL and 10<sup>4</sup>cfu/ml for PCR. The LAMP assay permits a one-step characterization of a specific gene, with no special equipment, and needs less time compared to the traditional PCR. It is assumed that the LAMP assay is a promising alternative method for the rapid identification of *S. aureus* and could be used in resource-limited laboratories and fields.

**Keywords:**-*Staphylococcus aureus*, Loop-mediated Isothermal Amplification (LAMP), *femA* and *mecA* genes.

## مقارنة طريقة تضخيم متساوي الحرارة و تفاعل سلسلة البلمرة التقليدية في تشخيص عزلات المكورات العنقودية الذهبية المقاومة للمثيسيلين والمعزولة من مصادر غذائية مختلفة

سندس علي جاسم<sup>1</sup> ، نهى جوزيف قنذلا<sup>2</sup>، سعد صباح فخري<sup>1</sup>

<sup>1</sup>مركز بحوث تلوث الغذاء ، وزارة العلوم والتكنولوجيا، بغداد، العراق

<sup>2</sup>قسم التقنيات الاحيائية ، كلية العلوم ، جامعة بغداد، بغداد، العراق

### الخلاصة

تعد بكتريا المكورات العنقودية الذهبية من الممرضات المهمة التي تصيب البشر، خصوصا تلك المقاومة للمثيسيلين (MRSA) ، اذ تنتج مجموعة متنوعة من السموم وتسبب مدى واسع من الالتهابات، بما في ذلك التهابات الأنسجة الرخوة، تجرثم الدم وغيرها بالإضافة الى التسمم الغذائي بالمكورات العنقودية. تعتبر المكورات العنقودية الذهبية من مسببات الأمراض التي تنتقل عن طريق الإنسان بسبب ابتلاع الأطعمة التي تحتوي على سلالات مقاومة للمثيسيلين. تم الكشف عن جينات *femA* و *mecA* في بكتريا المكورات العنقودية الذهبية

بأستعمال طريقة تضخيم متساوي الحرارة (LAMP), خصوصية طريقة LAMP كانت مماثلة لتقنية تفاعل البوليمراز المتسلسل PCR التقليدية. حددت كلتا الطريقتين 43 عزلة مشخصة للمكورات العنقودية الذهبية المقاومة للمثيسيلين (MRSA) والمعزولة من عينات غذائية مختلفة ولم تظهر نتيجة ايجابية لهذه الجينات عند التحري عنها في انواع بكتيرية اخرى (عترات أخرى) غير المكورات العنقودية الذهبية . وكانت درجة الحرارة المثلى لفحص LAMP 65 درجة مئوية وحدود الكشف بتركيز 2.5 نانوغرام / ميكرو لتر وعدد الخلايا البكتيرية في الوسط الزراعي السائل  $10^3$  cfu /ml عند مقارنته مع تقنية PCR ومحدد بتركيز 12.5 نانوغرام / ميكرو لتر و  $10^4$ cfu /ml .

يتميز اختبار LAMP بدقة عالية اذ يتم من خلاله التحري عن الجين بخطوة واحدة بدون الحاجة الى معدات متخصصة ويتطلب وقتاً أقل من تقنية تفاعل البوليمراز المتسلسل PCR ، مما يشير إلى أن تقنية LAMP قد تكون طريقة تشخيصية بديلة مناسبة للكشف عن المكورات العنقودية الذهبية ويمكن استعمالها في المختبرات المتخصصة وذات العلاقة بالاغذية .

## INTRODUCTION

*Staphylococcus aureus* is usually found to be tightly associated with humans; however, it can be detected as well in numerous parts of our environment, which include water, dust, feces, air, and clothing [1]. Numerous healthy people carry the *S. aureus* as a part of the normal microflora which is inhabiting the throat, nose, and skin, with nasal passage reported to harbor *S. aureus* in 10% to 50% of healthy populations [2].

*S. aureus* may be detected in several different types of food, which include mixed foods (such as salads and pasta), eggs and egg products, meats and meat products, baked goods, vegetables, and cheeses [3]. As a result of its virulence and multidrug resistance, *S. aureus* became one of the main concerns for food safety and public health in numerous countries [4- 8]. *S. aureus* that includes MRSA is one of the significant bacterial pathogens related to the health-care and community. They are producing various factors of virulence, which include toxic shock syndrome toxin (TSST) and staphylococcal enterotoxins (SEs), which are responsible for the staphylococcal food poisoning [9, 10]. A variety of rapid detection approaches were advanced to detect genes from *S. aureus* (MRSA). PCR technique has been proven as a beneficial tool for the reliable and fast detection of this type of genes [11, 12]. On the other hand, this assay needs electrophoresis for the detection of the products of the amplified DNA, making it more time-consuming protocol. Even though the real-time PCR assay was implemented for the rapid detection of the *S. aureus*, the approach also needs costly equipment [13].

LAMP, that is a procedure based upon the auto-cycling strand displacement DNA synthesis with the use of *Bst* DNA polymerase enzyme, has been developed in the year 2000 [14]. Such *Bst* DNA polymerase was obtained from the *Bacillus stearo-thermophilus*, possessing 5'—3' exonuclease activities and requiring high magnesium concentration for the optimal activities [14]. This enzyme may undergo inactivation via the incubation for 15min at 80°C. In LAMP approach, 4 (F3, B3, BIP, and FIP) to 6 (F3, B3, BIP, FIP, Loop-R, and Loop-F,) primers have been utilized for the amplifications, and the reactions have been performed at isothermal conditions [15, 16]. The Loop primers, binding to the loop structures, have been utilized for the purpose of shortening the LAMP assay's reaction time [17]. LAMP assay was advanced to rapidly identify a broad range of bacteria, which include *S. aureus*, *Campylobacter jejuni*, *Vibrio parahaemolyticus*, *Leptospira* species, *Campylobacter coli*, *Escherichia coli*, and *Salmonella Typhi* [18- 23]. Thus, this study aimed to verify the accuracy of LAMP assay in comparison with PCR technique for the molecular diagnosis of MRSA isolates.

## MATERIALS and METHODS

### Bacterial isolates and references strains

A total of 43 methicillin-resistant *S. aureus* isolates collected from 412 different food samples (meat, meat products, chicken products, dairy products, salads, and cakes) were included in the present study. Antibiotic susceptibility and phenotypic identification of the isolates were performed. The analysis findings were confirmed according to an earlier investigation [24]. All bacterial isolates were cultured on Brain Heart Infusion broth (BHI) (Oxoid/England) medium at 37°C for 18-24 hours.

Reference strains of *S. aureus* (Mu50 ATCC 700699) were utilized as positive control and *Bacillus subtilis* (PY 79) and *Escherichia coli* (DH $\alpha$ 5) as negative control.

#### DNA preparation for LAMP and PCR reaction

A single colony of a bacterium was cultured in 5ml of BHI broth for 18h-24h and, after that, 1ml of the aliquot was centrifuged at 13,000 rpm for 10 min at 4°C. The bacterial cell pellet was suspended in 100 $\mu$ l of the Tris-EDTA (TE) and heated for 15min at 95°C. After centrifugation at 13,000 rpm for 10 min, the supernatant was utilized as a DNA template source for the PCR and LAMP assays [25].

#### Primer design for LAMP and PCR reaction

The primers for *femA* and *mecA* genes, respectively, were targeted in the LAMP assay according to [26], while the oligonucleotide primers for *femA* and *mecA* genes were designed based on the sequence for PCR reaction according to [27], as described in Table-1.

**Table1**-Base sequences of primers for the detection of *femA* and *mecA* by PCR and LAMP.

Gene	primer	Oligonucleotide sequence (5'---3')	References
(LAMP) <i>femA</i>	F3	ATGCTGGTGGTACATCAA	Xu et al., 2012
	B3	TGGTTTAATAAAGTCACCAACAT	
	BIP	GGTCAATGCCATGATTTAATGCATAGCATTC CGTCATTTTGCC	
	FIP	CAGAAGATGCTGAAGATGCTGGTCAATAATT TCAGCATTGTAACC	
	LF	AATCATTTCCTTGCCT	
	LB	TGTAGTTAAATTCAA	
(LAMP) <i>mecA</i>	F3	AAGATGGCAAAGATATTCAACT	
	B3	AGGTTCTTTTTTATCTTCGGTTA	
	BIP	GTGGATAGCAGTACCTGAGCCTTGATGCTAA AGTTCAAAAAGAGT	
	FIP	CCTCAAACAGGTGAATTATTAGCACCTTCGT TACTCATGCCATAC	
	LF	TAATCATTTCATGTTG	
	LB	TGTAAGCACACCTTCATATGACGT	
(PCR) <i>femA</i>	F	AAAAAAGCACATAACAAGCG	Manisha et al., 2000
	R	GATAAAGAAGAAACCAGCAG	
(PCR) <i>mecA</i>	F	ACTGCTATCCACCCTCAAAC	
	R	CTGGTGAAGTTGTAATCTGG	

#### LAMP assay

LAMP assay for detecting *S. aureus* (MRSA) was carried out with the use of a group of three pairs of primers [26], as shown in Table1. LAMP reaction was performed in 25 $\mu$ l reaction mix, which is shown in Table-2. The negative control did not include any added DNA and DNA from each references strains *Bacillus subtilis* (PY79) and *Escherichia coli* (DH $\alpha$ 5). The positive control sample contained DNA of the *S. aureus* (Mu50 ATCC 700699). The reaction mix was incubated for 30min at 65°C in thermo mixer comfort (Germany/ Eppendorf) and the reaction was stopped at 80°C for 2min [14]. Negative and positive results were distinguished through the observation of the white turbidity of the reaction mix. In the case of positive results, the products of amplification of the LAMP assay were stained by SYBR® Green dye 0.1% (U.S.A/ Promega), and then determined by both visual observation of the change of the color and an ultraviolet (UV) fluorescence (Eppendorf / Germany).

**Table 2-LAMP reaction mixture for detection of *femA* and *mecA* genes**

LAMP reaction mixture	DNA target detection	No template control (NTC)
Warm Start LAMP 2X Master Mix	12.5 µl	12.5 µl
Fluorescent dye(50x)	0.5 µl	0.5µl
LAMP Primer Mix (10x)	2.50µl	2.50µl
Target DNA	1µl	-
dH <sub>2</sub> O	8.5µl	9.5 µl
Total Volume	25µl	25µl

**Detection of *mecA* and *femA* genes using duplex PCR method**

The *femA* and *mecA* genes were amplified for identifying isolates of *S. aureus* (*femA* gene) and MRSA (*mecA* gene). The oligonucleotide primers which are utilized for the amplification of the PCR for *femA* and *mecA* genes (Table-1) were designed based on sequences [27]. *femA* gene showed a yield of a 132 bp fragment, while *mecA* gene yielded a 163 bp fragment.

*femA* gene amplification was carried out in 35 cycles at 94°C initial denaturation for 5min, second denaturation for 1min at 94°C, primer annealing for 45sec at 60°C, and DNA extension for 1.5min at 72°C. Whereas *mecA* gene was amplified in 35 cycles, with DNA denaturation for 1min at 94°C, primer annealing for 45sec at 54°C, and DNA extension for 2 min at 72°C. The PCR products were tested with agarose (1.5% w/v) gel electrophoresis for 1.5hr at 70V in the presence of 100 bp DNA ladder. DNA bands were visualized using UV transilluminator documentation system and photography. PCR amplification was performed in 25µl, while the components used are shown in Table-3.

**Table 3-PCR reaction mixture for *femA* and *mecA* genes**

PCR reaction mixture	Final Concentration	Volume for one reaction (µl)
Sterile dd H <sub>2</sub> O		4.5
Green Master Mix (2X) (U.S.A/ Promega)	1X	12.5
MgCl <sub>2</sub>	1mM	1
Forward Primer	0.20µm	1
Reverse Primer	0.20µm	1
DNA	0.20 µg	5
Final Volume reaction		25

**Determination of the accuracy of PCR and LAMP assays using bacterial cultures**

*S. aureus* (Mu50 ATCC 700699) was cultured in BHI broth for 18h at 37°C and a set of 10-fold dilutions was performed in a solution of normal saline. The cell suspensions were centrifuged for 10 min at 13000 rpm. The cell pellets were re-suspended in 100µl of Tris- EDTA and subjected to DNA extraction for PCR and LAMP assays, as described earlier[25]. For the purpose of confirming the size of the inoculum, 0.1ml aliquot of every dilution of cell culture was plated onto Baird-parker agar (BPA) in duplicates. Following the incubation for 24h at 37°C, the number of the black shiny colonies with the clear areas surrounding the colonies was counted.

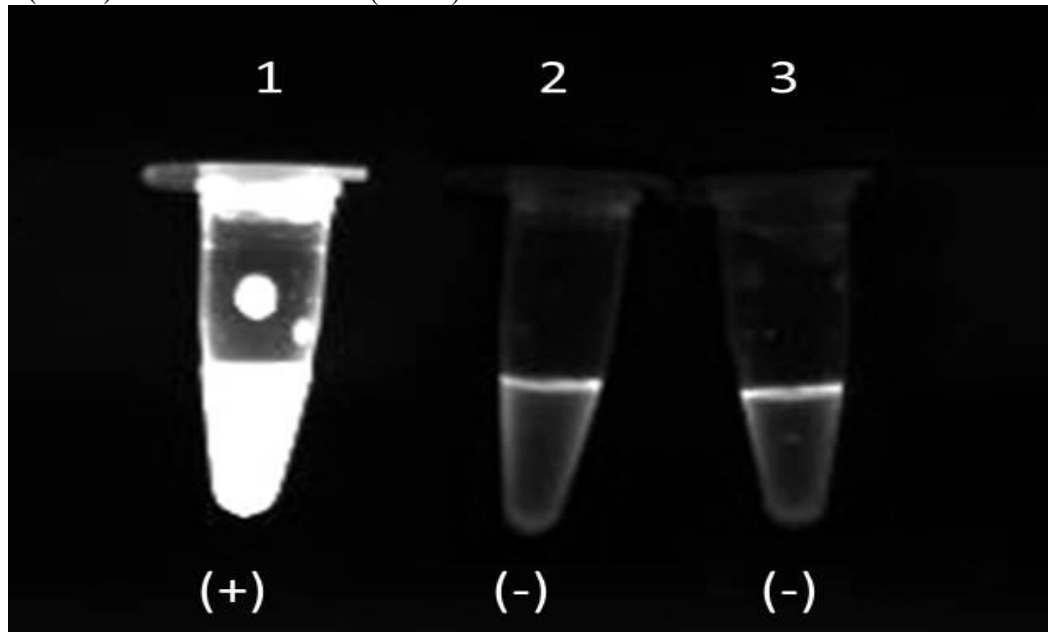
**RESULTS**

A total of 43 isolates of *S. aureus* (MRSA) and three reference strains were included in evaluating the specificity of PCR and LAMP assays for the detection of the *femA* and *mecA* genes of *S. aureus*. In the LAMP assay, negative and positive results were identified through the observation of white turbidity of reaction mix due to the precipitation of magnesium pyrophosphate, which is produced by auto-cycling reaction of the strand displacement, as illustrated in Figure-1.

Also, through the observation of the changes in the color by the naked eyes and the fluorescence under the ultra-violet light of the LAMP products which are stained by the SYBR Green dye, the orange color indicates a negative result, whereas the green color indicates a positive result. Very bright colors are determined as positive and the ones that lack the notable fluorescence are deemed to be negative, as showed in Figure-2.

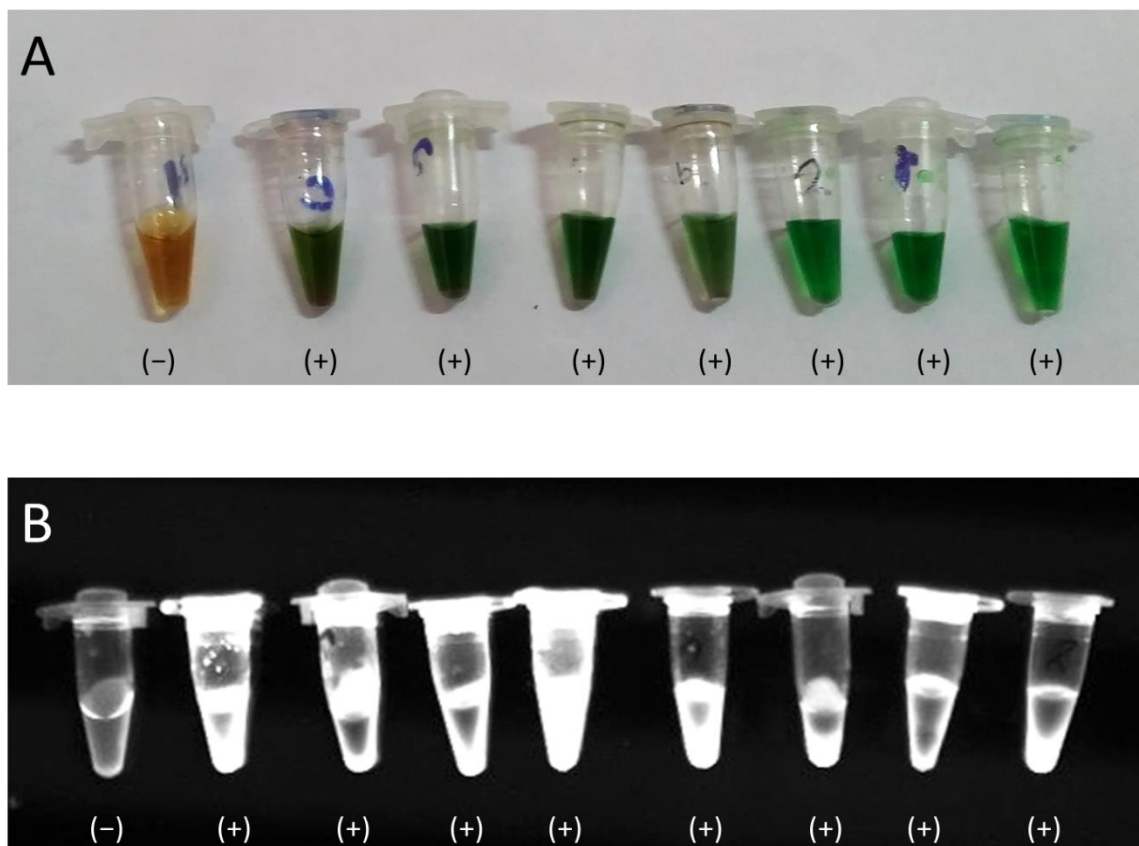
Both LAMP and PCR methods correctly identified *femA* and *mecA* genes for 43 isolates of *S. aureus* and *S. aureus* strain (Mu50 ATCC 700699) and did not detect the other two reference strains *Bacillus*

*subtilis* (PY79) and *Escherichia coli* (DH $\alpha$ 5).



**Figure 1-** Amplification of LAMP products determined by visually detecting turbidity.

- 1- *S. aureus* (Mu50 ATCC 700699) positive.
- 2- *Bacillus subtilis* (PY79) negative.
- 3- *Escherichia coli* (DH $\alpha$ 5) negative.



**Figure 2-A-** Amplification of the LAMP products dyed with SYBR Green and visually found through the examination of the color changes with the naked eyes:

- Orange points to the negative result.
- Green points to the positive result.

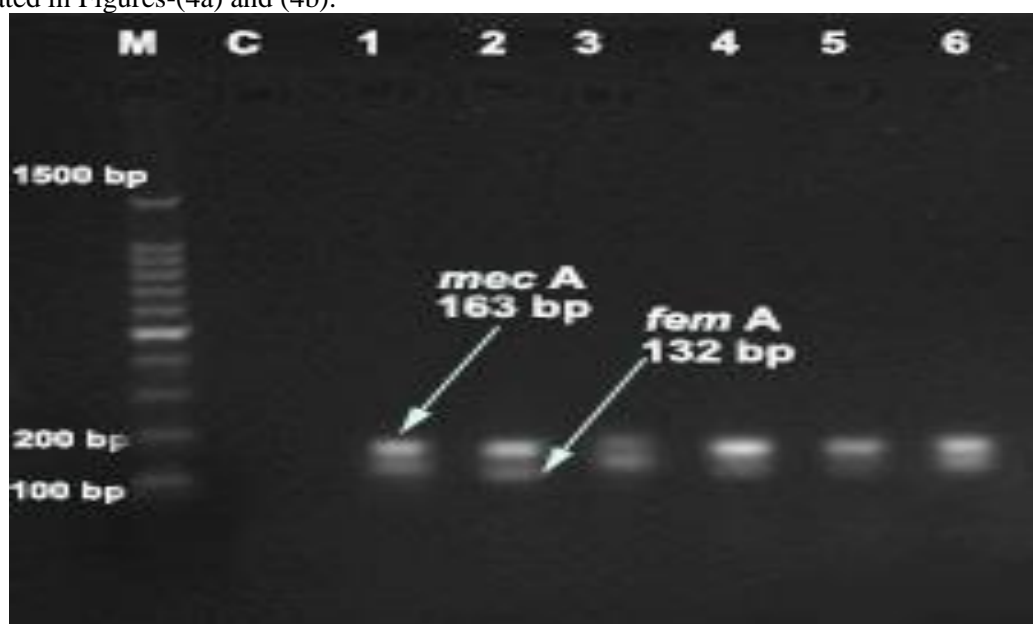
**B-** Amplification of the LAMP products dyed with SYBR Green and visually found by fluorescence under the ultra-violet light:

Very bright ones indicate positive.

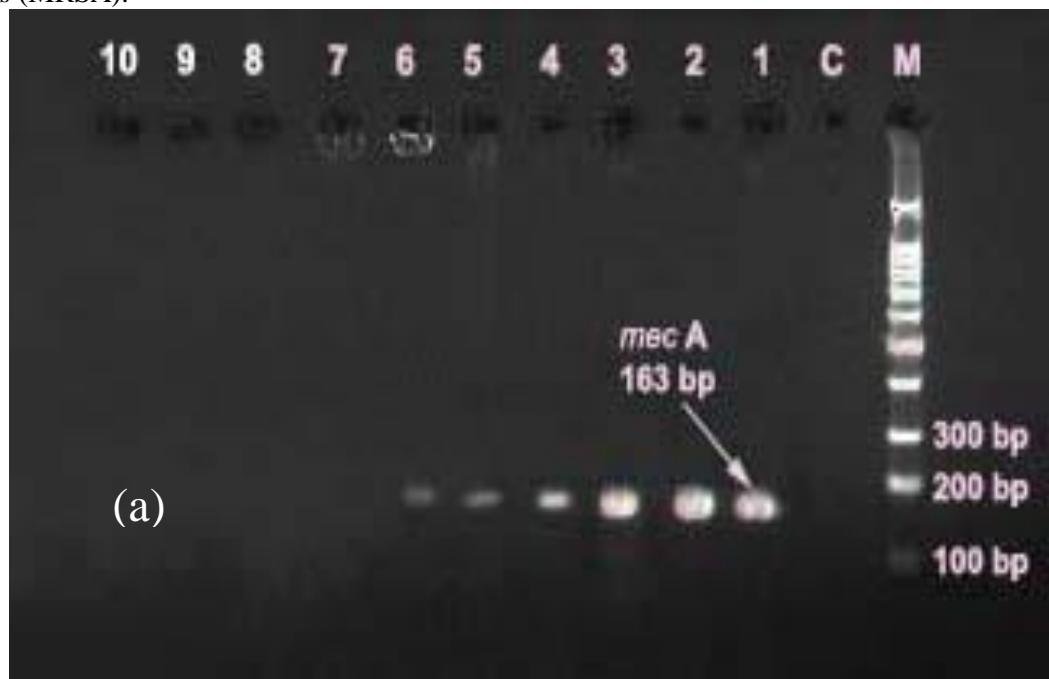
- The ones that lack the appreciable fluorescence indicate the negative.

PCR results in agarose gel electrophoresis of *S. aureus* (MRSA) used in this study are shown in Figure -3. The molecular detection for *femA* gene showed a band with a molecular fragment size of 132bp, while the size was 163bp for *mecA* gene.

Detection limit results of the PCR and LAMP reactions with the use of the bacterial culture showed that the sensitivity of LAMP assay was  $10^3$ cfu/ml, whereas that of the PCR was  $10^4$ cfu/ml, as illustrated in Figures-(4a) and (4b).

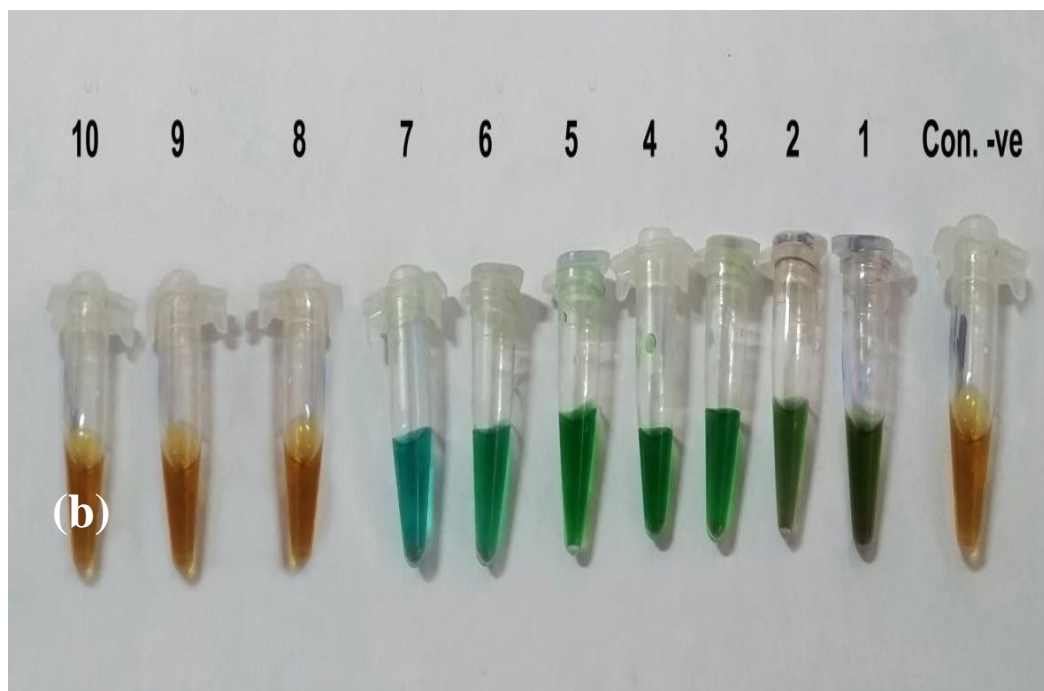


**Figure 3-**Agarose gel electrophoresis of PCR product of *S. aureus* (MRSA) used in this study (1.5 hour, 70V). Lane M=Marker, Lane C=control negative, Lanes (1-6)=*femA* and *mecA* positive *S. aureus* (MRSA).



**Figure 4a-**Agarose gel electrophoresis of PCR from a variety of *S. aureus* (Mu50 ATCC 700699) concentration values. Lane M=DNA ladder, lane C=negative control, 1= $10^9$ cfu/ml, 2= $10^8$ cfu/ml, 3= $10^7$ cfu/ml, 4= $10^6$ cfu/ml, 5= $10^5$ cfu/ml, 6= $10^4$ cfu/ml, 7= $10^3$ cfu/ml, 8= $10^2$ cfu/ml, 9=10 cfu/ml, 10=1 cfu/ml.





**Figure 4b-** LAMP products from a variety of *S. aureus* (Mu50 ATCC 700699) concentration values. C=negative control, 1= $10^9$ cfu/ml, 2= $10^8$ cfu/ml, 3= $10^7$ cfu/ml, 4= $10^6$ cfu/ml, 5= $10^5$ cfu/ml, 6= $10^4$ cfu/ml, 7= $10^3$ cfu/ml, 8= $10^2$ cfu/ml, 9=10 cfu/ml, 10=1 cfu/ml.

### Discussion

*S. aureus* is presently a common food-borne pathogen worldwide and triggered high concern and interest due to their low detection level and association with antibiotic resistance. Therefore, precise and fast methods of detection are necessary to evaluate food and food products for the reduction of the risks of related food poisoning which results from contamination and infection by the food-borne pathogens.

MRSA is a very important bacterium that causes many different types of human infection [28]. Fast detection and confirmation of MSRA is significant for adequately and appropriately treating those infections, as well as infection and surveillance control. There is a small number of researches that use the LAMP assays to detect *Staphylococcal* isolate types, including *mecA* and *femA* genes from the isolates of the food [26].

In the present study, the accuracy of PCR and LAMP assays was determined using non-*Staphylococcus* reference stains: *Bacillus subtilis* (PY79) and *Escherichia coli* (DH $\alpha$ 5). There were no false positive amplification observed, which indicates the accuracy of both methods, but accuracy of the LAMP approach was 10-fold higher than PCR technique for detecting the *mecA* and *femA* genes in *S. aureus*. The lower accuracy of PCR compared to that of LAMP can be a result of the existence of the inhibitors of PCR when the template DNA is not purified [29- 31].

Compared with the time-consuming phenotypic approaches and the PCR which requires the thermal cycler as well as technical skills, the LAMP utilizes simple water bath and permits visually detecting the amplified products through fluorescence or turbidity. LAMP assay can be defined as a simpler and faster approach compared to the PCR. The entire time of amplification for the LAMP equals 60min, in comparison with that of the PCR that equals approximately 3h-4h. The method is based upon the auto-cycling synthesis of the strand displacement DNA with the use of *Bst* DNA polymerase enzyme. It utilizes 6 primers that recognize 6 to 8 distinctive target gene regions, which facilitates detecting very minute target DNA quantities. Also, amplification takes place under the isothermal states [14, 32] and the loss of time because of the thermal variations is prevented [33]. Moreover, reaction is not inhibited with inhibitors present in the sample [34]. The product of the amplified gene may be observed by naked eyes, either through the turbidity as white precipitate or via a change in the color, utilizing fluorescent intercalating dyes (i.e. SYBR Green) [14]. LAMP assay results were compared to the conventional and phenotypic PCR, with the benefit of the LAMP assay

of being fast, with a 90min turnaround time after isolating the organism from the specimen of the food. The method is cost effective as well. This is the reason why the LAMP was proved as one of the powerful tools that are beneficial in the detection, performing reliable virulence enterotoxin gene identifications of the pathogens from a variety of food sources, particularly for the resource-limited labs in the developing nations. For the routine uses in food analyses, approaches of the detection must be specific, simple, reliable, and robust. The options of the LAMP may be extended for the detection of the pathogens which exist in food samples, which reduces illness causing effects of food contamination as a result of time taken to identify them.

### CONCOLUSIONS

This research has proven that the LAMP assay may be utilized as one of the fast molecular diagnostic assays to detect methicillin resistant *S. aureus*. It may be adapted easily in any of the microbiology laboratories as a rapid molecular assay, as a result of the fact that it is simple and easy to perform with no advanced instrumentations.

### REFERENCES

1. Bergdoll, M. S. **1983**. Enterotoxins. In: Easmon CSF, Adlam C, eds. *Staphylococci and staphylococcal infection*. London: Academic Press. **2**: 559-598.
2. Genigeogis, C. A. **1989**. Present state of Knowledge on staphylococcal intoxication. *Int. Journal Food Microbiol.* **9**: 327-60.
3. Zeleny, R.; Emteborg, H. and Charoud-Got, J. **2015**. Development of a reference material for *Staphylococcus aureus* enterotoxin A in cheese: feasibility study, processing, homogeneity and stability assessment. *Food Chem.* **168**: 241-6.
4. Shin, E.; Hong, H. and Park, J. **2016**. Characterization of *Staphylococcus aureus* fecal isolates associated with food-borne disease in Korea. *Journal Appl. Microbiol.* **121**: 277-86.
5. Sheet, O. H.; Grabowaski, N. T. and Klein, G. **2016**. Development and validation of a loop mediated isothermal amplification (LAMP) assay for the detection of *Staphylococcus aureus* in bovine mastitis milk sample. *Mol. Cell Probes.* **30**: 320-5.
6. Lidiane, S. P., Rosângela, Z. M. and Joyce, B. A. L. **2017**. Toxigenic *Staphylococcus aureus* in processing of coalho and mozzarella cheese. *Afr. Journal Microbiol Res.* **11**: 521-9.
7. Jans, C.; Merz, A. and Johler, S. **2017**. East and West African milk products are reservoirs for human and livestock-associated *Staphylococcus aureus*. *Food Microbiol.* **65**: 64-73.
8. Miao, J., Liang, Y. and Chen, L. **2017**. Formation and development of *Staphylococcus* biofilm: with focus on food safety. *Journal Food Safety.* **37**: e12358.
9. Adwan, G. M., Abu-Shanab, B. A.; Adwan, K. M. and Jarrar, N. R. **2006**. Toxigenicity of *Staphylococcus aureus* isolates from Northern Palestine. *Emirates Medical Journal.* **24**(2): 127-129.
10. Udo, E. E., Al-Mufti, S. and Albert, M. J. **2009**. The prevalence of antimicrobial resistance and carriage of virulence genes in *Staphylococcus aureus* isolates from food handlers in Kuwait City restaurants. *BMC Research Notes.* **2**. Article p108.
11. Tamaparu, S.; McKillip, J. and Drake, M. **2001**. Development of a polymerase chain reaction assay for detection and differentiation of *Staphylococcus aureus* in dairy products. *Journal Food Prot.* **64**: 664-8.
12. Ercolini, D., Blaiotta, G., Fusco, V. and Coppola, S. **2004**. PCR-based detection of enterotoxigenic *Staphylococcus aureus* in the early stages of raw milk cheese making. *Journal Appl. Microbiol.* **96**: 1090-6.
13. Klotz, M.; Opper, S.; Heeg, K. and Zimmermann, S. **2003**. Detection of *Staphylococcus aureus* enterotoxins A to D by real-time fluorescence PCR assay. *Journal clin. Microbiol.* **41**: 4683-7.
14. Notomi, T., Okayama, H., Masubuchi, H., Yonekawa, T., Watanabe, K., Amino, N. and Hase, T. **2000**. Loop-mediated isothermal amplification of DNA. *Nucleic Acids Res.* **28**: e63.
15. Yang, H., Ma, X., Zhang, X., Wang, Y. and Zhang, W. **2011**. Development and evaluation of a Loop-mediated isothermal amplification assay for the rapid detection of *Staphylococcus aureus* in food. *European Food Research and Technology.* **232**(5): 769-776.
16. Nagarajappa, S., Thakur, M. S. and Manonmani, H. K. **2011**. Detection of enterotoxigenic staphylococci by Loop-mediated isothermal amplification method. *Journal of Food Safety.* **32**(1): 59-65.



17. Nagamine, K.; Hase, T. and Notomi, T. **2002**. Accelerated reaction by Loop-mediated isothermal amplification using loop primers. *Molecular and Cellular Probes*. **16**(3): 223-229.
18. Yamazaki, W.; Taguchi, M. and Ishibashi, M. **2008**. Development and evaluation of a Loop-mediated isothermal amplification assay for rapid and simple detection of *Campylobacter jejuni* and *Campylobacter coli*. *Journal of Medical Microbiology*. **57**(4): 444-451.
19. Hill, J., Beriwal, S. and Chandra, I. **2008**. Loop-mediated isothermal amplification assay for rapid detection of common strains of *Echerichia coli*. *Journal of Clinical Microbiology*. **46**(8): 2800-2804.
20. Sonthayanon, P., Chierakul, W. and Wuthiekanun, V. **2011**. Accuracy of Loop-mediated isothermal amplification for diagnosis of human leptospirosis in Thailand. *American Journal of Tropical Medicine and Hygiene*. **84**(4): 614-620.
21. Francois, P., Tangomo, M. and Hibbs, J. **2011**. Robustness of a Loop-mediated isothermal amplification reaction for diagnosis applications. *FEMS Immunology and Medical Microbiology*. **62**(1): 41-48.
22. Xu, Z.; Li, L. and Chu, J. **2011**. Development and application of Loop-mediated isothermal amplification assay on rapid detection of various types of staphylococci strains. *Food Research International*. **47**(2): 166-173.
23. Wang, L., Zhao, X. and Chu, J. **2011**. Application of an improved loop-mediated isothermal amplification detection of *Vibrio parahaemolyticus* from various seafood samples. *African Journal of Microbiology*. **5**(31): 5765-5771.
24. Jassim ,S.A..Kandala, N.J. and Abdullah, T.S. **2020**. Molecular Detection of Enterotoxins Genes of Multiresistant *Staphylococcus aureus* Isolates from Different Sources of Food. *Iraqi Journal of Science*. **62**(1).
25. Reischl, U., Lindle, H. J., Metz, M., Leppmeier, B. and Lehn, N. **2008**. Rapid identification of methicillin-resistant *Staphylococcus aureus* and simultaneous species confirmation using real-time fluorescence PCR. *J. Clin. Microbiol.* **38**: 2429-33.
26. Xu, Z., Li, L., Chu, J., Peters, B., Harris, M. and Li, B. **2012**. Development and application of loop-mediated isothermal amplification assays on rapid detection of various types of Staphylococci strains. *Food Res. Int.* **47**: 166-73.
27. Manisha M., Gehua W. and Wendy M. J. **2000**. Multiplex PCR for Detection of Genes for *Staphylococcus aureus* Enterotoxins, Exfoliative Toxins, Toxic Shock Syndrome Toxin 1, and Methicillin Resistance. *Journal of Clinical Microbiology*. **38**(3): 1032-1035.
28. David, M. Z. and Daum, R. S. **2010**. Community-associated methicillin-resistant *Staphylococcus aureus*: epidemiology and clinical consequences of an emerging epidemic. *Clin. Microbiol. Rev.* **23**: 616-87.
29. Kaneko, H., Kawana, T., Fukushima, E. and Suzutani, T. **2007**. Tolerance of loop-mediated isothermal amplification to a culture medium and biological substance. *J. BiochemBiophys Methods*. **70**: 499-501.
30. Okada, K., Chantaroj, S. and Taniguchi, T. **2010**. A rapid, simple and sensitive loop-mediated isothermal amplification method to detect toxigenic *Vibrio cholera* in rectal swab samples. *Diagn Microbiol Infect Dis*. **66**: 135-9.
31. Karanis, P., Thekiso, O., Kiouptsi, K., Ongerth, J., Igarashi, I. and Inoue, N. **2007**. Development and preliminary evaluation of a loop-mediated isothermal amplification procedure for sensitive detection of *Cryptosporidium Oocysts* in fecal and water samples. *Appl. Environ Microbiol.* **73**: 5660-2.
32. Zhao, X., Li, Y., Park, M., Wang, J., Zhang, Y. and He, X. **2013**. loop-mediated isothermal amplification assay targeting the femA gene for rapid detection of *Staphylococcus aureus* from clinical and food samples. *J. Microbiol Biotechnol.* **23**: 246-50.
33. Lim, K. T., The, C. S. and Thong, K. L. **2013**. Loop-mediated isothermal amplification assay for the rapid Detection of *Staphylococcus*. *Biomed Res. Int.* **10**: 1-5.
34. Tomita, N., Mori, Y., Kanda, H. and Notomi, T. **2008**. Loop-mediated isothermal amplification (LAMP) of gene sequences and simple visual detection of products. *Nat. Protoc.* **3**: 877-92.