

1 0.5 0.2

.()

STUDY OF THALLIUM INTOXICATION IN BROILER CHICKS

Hashim .H. Majid

College of Medicine, University of Diyala. Diyala-Iraq

Abstract

The study of thallium intoxication on 120 broiler chicken by using different doses of thallium, 0.2; .5 and 1.0 mg/kg. B.Wt. it was observed that the clinical sign, bloody diarrhea, appeared in the last ten days of the experiment. In second and third group the pathologic changes was hemorrhages and edema of skeletal muscles and brain. Petechial hemorrhage in the testis, ovary and thyroid gland. The histopathological changes were comprised of hyperplasia, cellular, infiltration in the thyroid gland, narrow cortex of the ovary, in the brain there were remarkable edema with perivascular cuffing and loss of purkinge cells in the cerebellum. The results suggest that thallium was accumulative.

()

(/ 1)

()

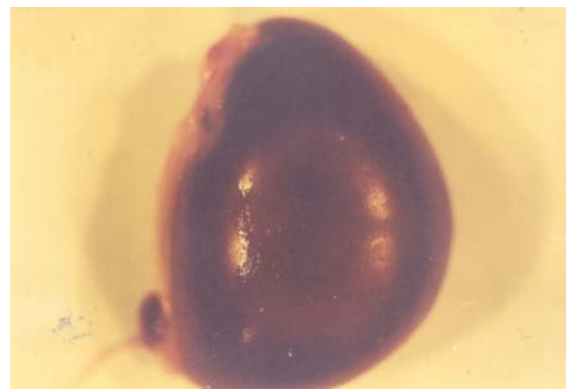
1 0.5 0.2



(Incoordination and paralysis)

()

()



() :



()

(0.5)

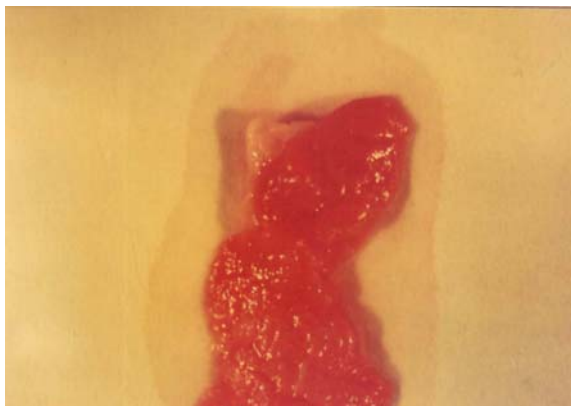
()



:

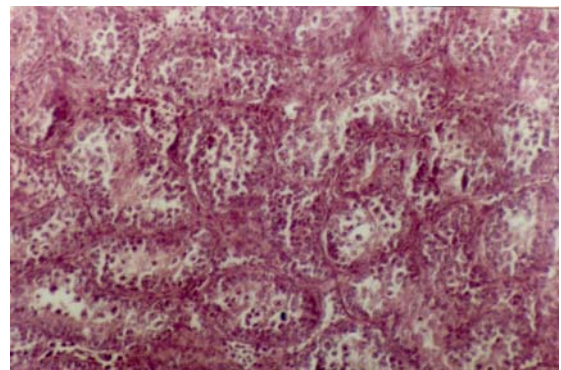


:

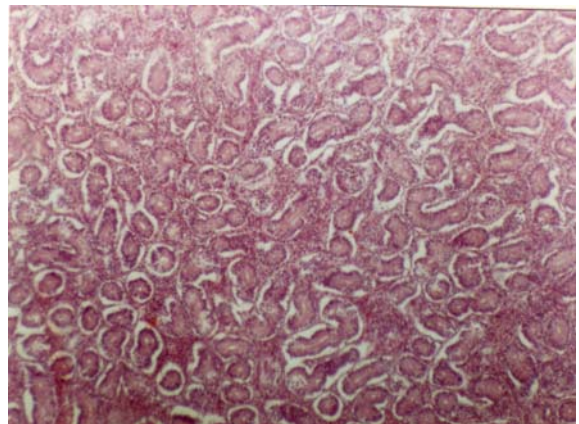


:

.(-) ().

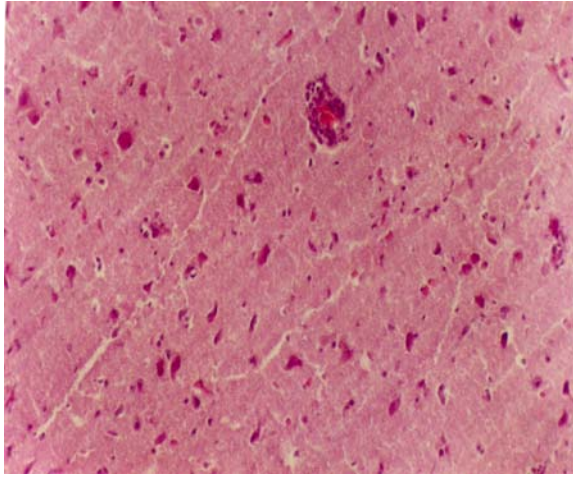


:



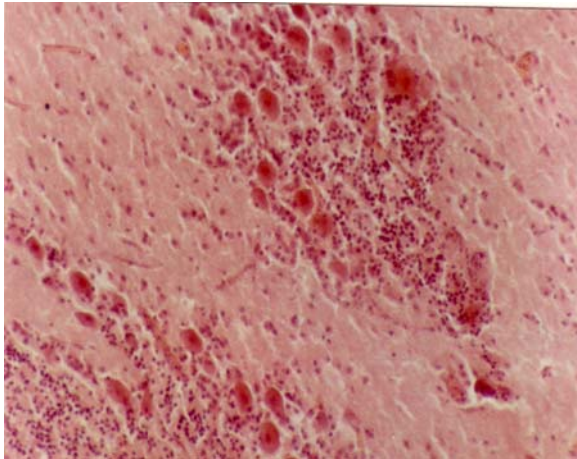
:

(x . -) .



:

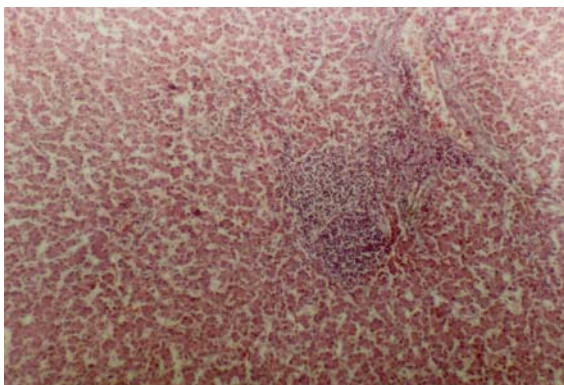
.(x . -) .



:

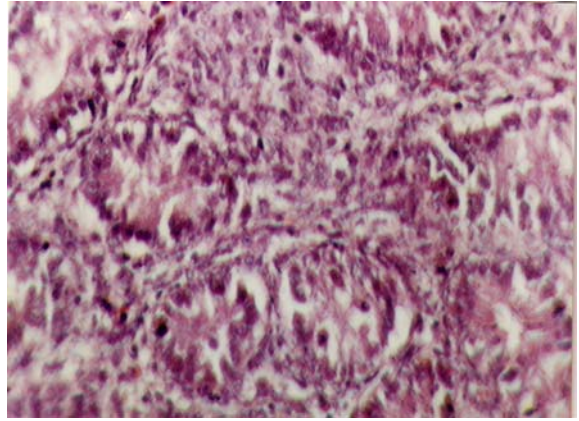
satellitosis

.(x . -)



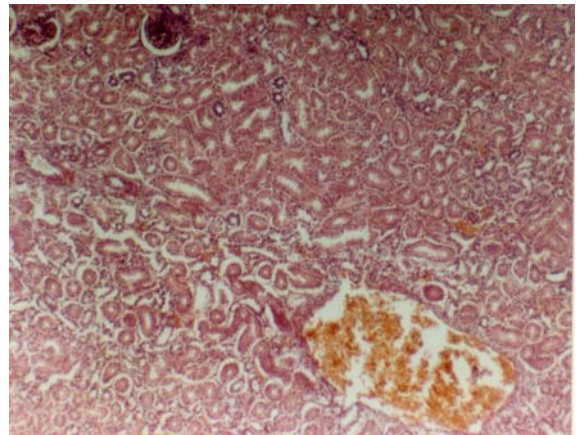
:

(x . -) .



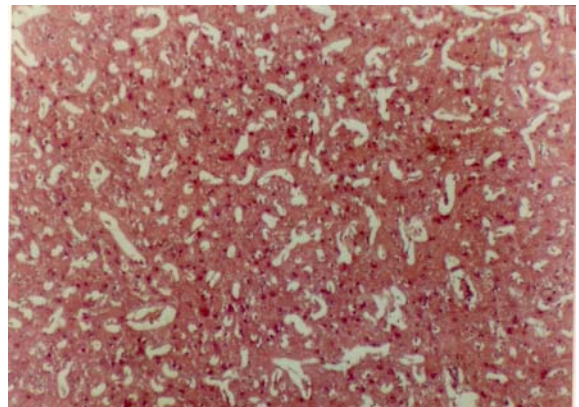
:

(x . -)



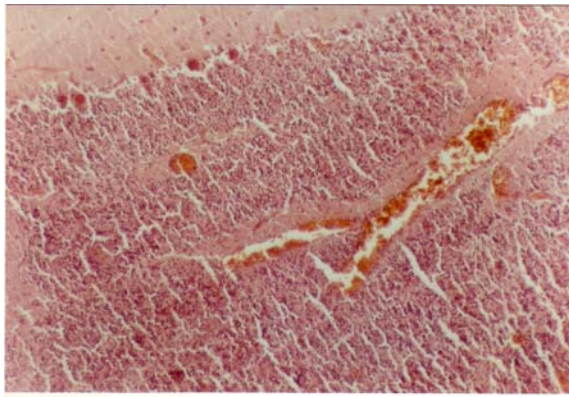
:

(x . -)



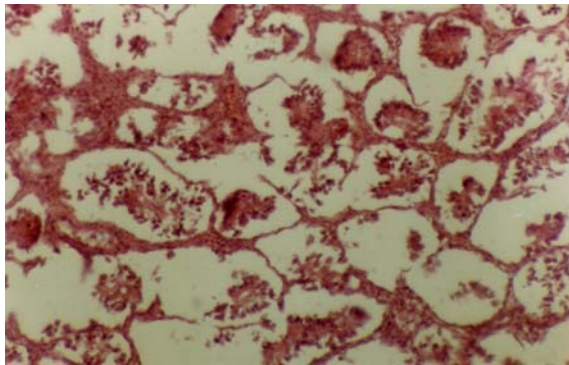
:

(x . -) .



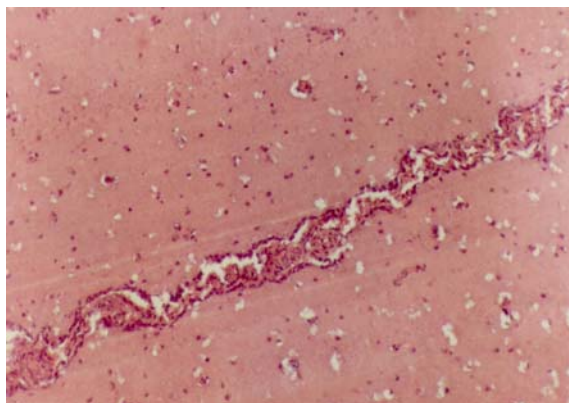
:

(× . -).



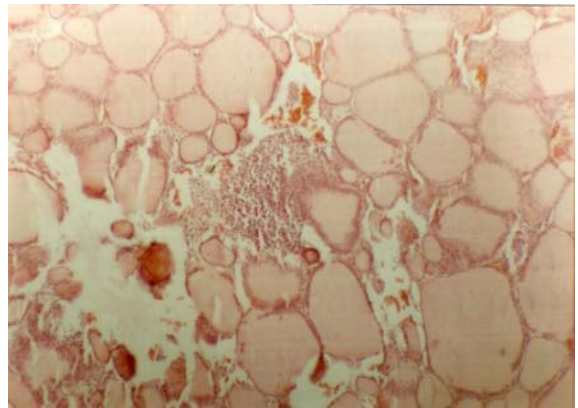
:

(× . -).



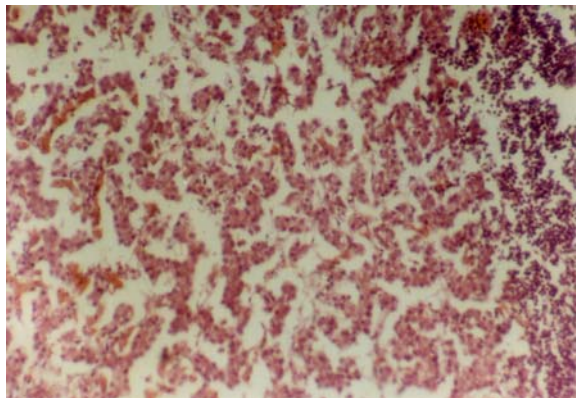
:

(× . -).



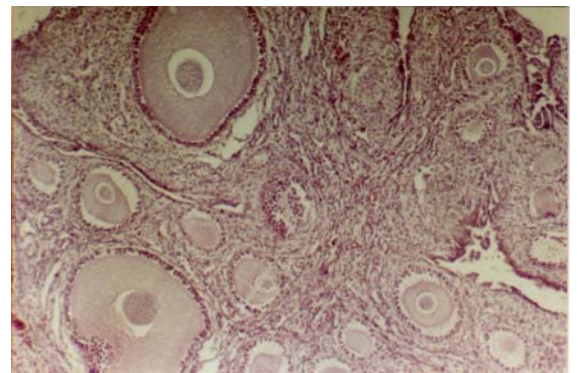
:

(× . -).



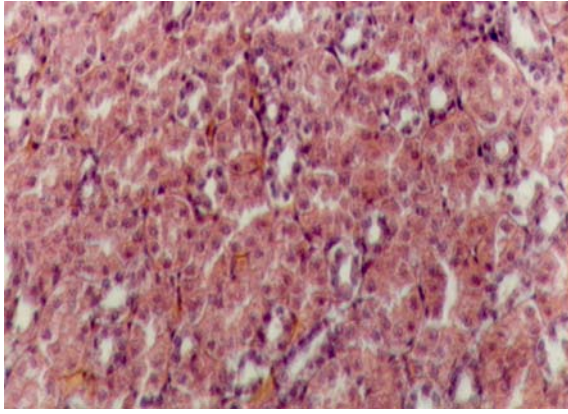
:

(× . -)



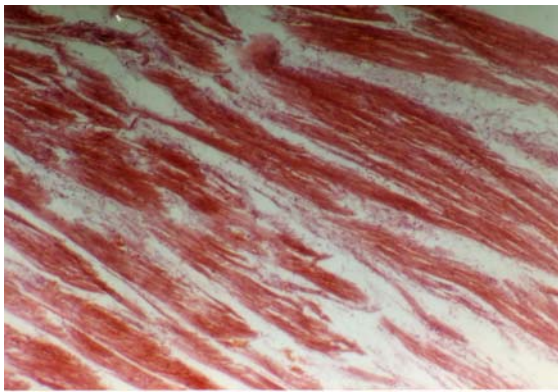
:

(× . -).



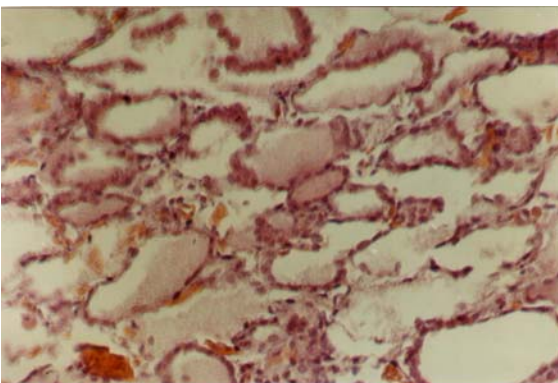
:

(× . -) .



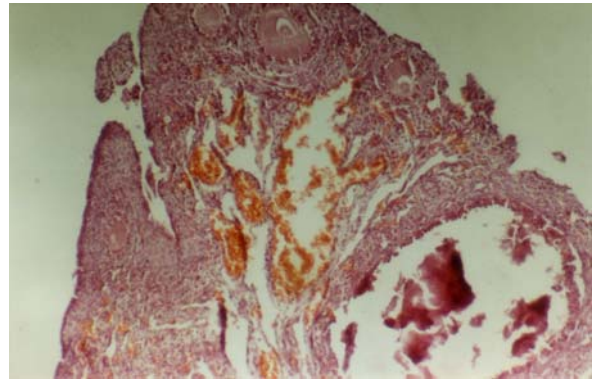
:

(× . -) .



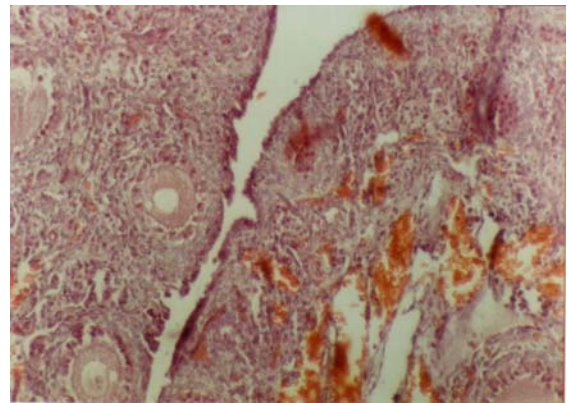
:

× . -) .
(



:()

(× . -) .



:()

(× . -)

. []

. []

. []

