



ISSN: 0067-2904

## Phylogenetic tree analysis based on the 16S sequence alignment for *Klebsiella* spp. isolated from different sources

Israa A.J. Ibrahim<sup>\*1</sup>, Tuqa A. Kareem<sup>2</sup>, Yaseen M. Azeez<sup>3</sup>, Hawraa K. Falhi<sup>3</sup>

<sup>1</sup>Department of Microbiology, College of Science, Al-Karkh University of Science, Baghdad, Iraq

<sup>2</sup>Al-Mustafa University College, Baghdad, Iraq

<sup>3</sup>Al-Kindi Teaching Hospital, Baghdad, Iraq

Received: 18/6/ 2019

Accepted: 27/ 7/2019

### Abstract

16S ribosomal RNA (16S rRNA) gene sequences used to study bacterial phylogeny and taxonomy have been by far the most common housekeeping genetic marker utilized for identification and ancestor determination. This study aimed to investigate, for the first time, the relationship between *Klebsiella* spp. isolated from clinical and environmental samples in Iraq.

Fifty *Klebsiella* spp. isolates were isolated from clinical and environmental sources. Twenty-five isolates were collected from a fresh vegetable (*Apium graveolens*) and 25 from clinical samples (sputum, wound swab, urine). Enteric bacteria were isolated on selective and differential media and identified by an automatic identification system, vitek-2. The total DNA was extracted and PCR amplified for selected isolates. The 16S rRNA gene was amplified by using the universal primer 27F (5'- AGAGTTTGATCCTGGCTCAG- 3') and 1492R (5'- GGTTACCTTGTTACGACTT- 3'). The 16SrRNA gene sequence was analysed among some local isolates, and the results were compared with the standard data of similar registered strains in NCBI. The most common species of *Klebsiella* was *Klebsiella pneumoniae pneumoniae* (*Kpp*), followed by *Klebsiella pneumoniae ozaenae* (*Kpo*) and *Klebsiella oxytoca* (*Ko*). The results of the identification of species and sub species by using the biochemical test (vitek-2) were more precise than those obtained by the use of the universal primer. Phylogenetic tree strategies have clearly indicated a relatively close similarity amongst all analysed *Klebsiella* isolates and revealed the intra-species genetic distance between the individual isolates of the *Klebsiella* spp. In conclusion, our results revealed the main advantage of using universal primers for the identification of *Klebsiella* spp. and their root from nature.

**Keywords:** *Klebsiella* spp., *Apium graveolens* , clinical sample, 16S sequence.

تحليل الشجرة الوراثية بالاعتماد على تسلسل جين S16 لجنس *Klebsiella* spp المعزولة من

مصادر مختلفة

اسراء عبد الجبار إبراهيم<sup>1\*</sup>، تقى عبد الكريم حميد<sup>2</sup>، ياسين محسن عزيز<sup>3</sup>، حوراء كاظم فلحي<sup>3</sup>

<sup>1</sup>كلية العلوم قسم الاحياء المجهرية، كلية الكرخ للعلوم، بغداد، العراق

<sup>2</sup>كلية المصطفى الجامعة قسم التحليلات المرضية، بغداد، العراق

<sup>3</sup>مستشفى الكندي التعليمي، بغداد، العراق

\*Email: israa\_ibrahim66@yahoo.com

## الخلاصة

شملت الدراسة استعمال جين *16S rRNA* لدراسة التطور والتصنيف البكتيري بواسطة جينات ال housekeeping لتشخيص وتحديد السلف . تهدف هذه الدراسة إلى التحقيق ، لأول مرة ، في العلاقة بين *Klebsiella spp* المعزولة من العينات السريرية والبيئية في العراق .

50 عزلة من بكتريا *Klebsiella spp* تم عزلها من مصادر سريرية وبيئية مختلفة، (25) عزلت من مصادر مختلفة من الخضروات الطازجة في الأسواق العراقية المحلية (*Apium graveolens*) و (25) عزلة من العينات السريرية ( البلغم، مسحات الجروح، الادار) .

البكتريا المعوية تم عزلها على أوساط انتقائية وتفريقية وشخصت بواسطة استعمال جهاز الفايتهك vitek-2 . تم استخلاص الدنا الكلي DNA وعمل PCR للعزلات المختارة . جين *16SrRNA* تم تضخيمه باستعمال البرايمر 27F

(5'-GGTTACCTTGTTCAGACTT-3') و (5'-AGAGTTTGATCCTGGCTCAG-3') .1492R تم تحليل تسلسل الجينات 16s RNA بين بعض العزلات المحلية ، وتمت مقارنة النتائج مع البيانات القياسية من سلالات مماثلة في NCBI. الأنواع الأكثر شيوعاً في كلبسيلا كانت *Klebsiella pneumoniae pneumoniae (Kpp)* يتبعها *Klebsiella pneumoniae pneumoniae (Kpo)* و *Klebsiella oxytoca (Ko)*. أظهرت نتائج تحديد الأنواع والأنواع الفرعية باستخدام اختبار الكيمياء الحيوية (vitek-2) على أنها أكثر دقة من استخدام البرايمر العام. أظهرت نتائج تحليل الشجرة الوراثية وجود تشابه وثيق نسبياً بين جميع عزلات الكلبسيلا التي تم تحليلها وكشفت عن المسافة الوراثية بين الأنواع المعزولة من أنواع الكلبسيلا. كشفت نتائجنا الميزة الرئيسية لاستعمال برايمر (Universal) لتشخيص بكتريا *Klebsiella* الاصل من الطبيعة.

## Introduction

*16S rRNA* gene sequences used to study bacterial phylogeny and taxonomy have been, for several reasons, by far the most commonly used housekeeping genetic marker. These reasons include the following; the 16SrRNA sequence is present in almost all bacteria, often existing as a multigene family, or operons; the function of the *16S rRNA* gene has not changed over time, suggesting that random sequence changes are a more accurate measure of time (evolution); and the *16S rRNA* gene (1,500 bp) is large enough for informatics purposes [1]. Phylogenetic markers include the presence of specific protein coding or structural genes, the combinations of such genes and their variants, and insertion and repeat elements. Among these molecular markers is the *16S rRNA*, an ~1500 bp gene coding for a catalytic RNA that is part of the 30S ribosomal subunit, which has desirable properties that allowed it to become the most commonly used molecular marker. Of these desirable properties, the functional constancy of this gene assures its validity as a molecular chronometer, which is essential for a precise assessment of the phylogenetic relatedness of organisms [2]. *16S rRNA* sequencing is routinely used in the clinical laboratory but rarely used for microbial limits test for nonparenteral products.

"Bacterial *16S rRNA* genes contain nine "hypervariable regions" (V1-V9) that demonstrates considerable sequence diversity among different bacteria. Species-specific sequences within a given hypervariable region constitute useful targets for diagnostic assays and other scientific investigations" [3]. Molecular testing allows for highly specific and sensitive identification of a large number of pathogens from clinical isolates and clinical specimens. The ability of molecular techniques to identify pathogens directly from clinical samples makes the rapid identification without recourse to culture possible [4]. The species of *Klebsiella* are all gram-negative and non-motile. They tend to be shorter and thicker when compared to others in the Enterobacteriaceae family. More than eight species and subspecies of the genus *Klebsiella* spp. were recorded in Bergey's Manual such as: *K. p. subsp. pneumoniae*, *K. p. subsp. ozaenae*, *K. p. subsp. rhinoscleromatis*, *K. mobilis*, *K. oxytoca*, *K. planticola*, *K. terrigena*, *K. ornithinolytica*, and *K. granulomatis* [5]. *Klebsiella* can cause different types of healthcare-associated infections, including pneumonia, bloodstream infections, wound or surgical site infections, and meningitis [6]. By using genetic information can discover epidemiologic links between clinical and non-clinical isolates [7].

*Klebsiella pneumoniae*, a member of the family Enterobacteriaceae, is a rod-shaped, Gram-negative, lactose-fermenting bacillus with a prominent capsule. Typical *K. pneumoniae* is an opportunistic pathogen that is widely found in the mouth, skin and intestines, as well as in hospital settings and medical devices.

The aim of this study was to identify *Klebsiella* spp. isolated from different sources by using 16S gene sequencing and to detect the relationship between clinical and environmental samples.

## Materials and Methods

### Specimens

In this study, 50 *Klebsiella* spp. isolates were analysed, 25 of which were from leafy vegetables (veg.) collected from local market (Figure-1), while the other 25 bacterial isolates were collected from clinical samples from the Al-Kenday Hospital in Baghdad. Sample collection was carried out from May 2018 to August 2018 (Table-1).



**Figure 1-** Shape of *Apium graveolens*

### Isolation and Identification

All samples in the first isolates were cultured on MacConkey agar and Eosin methylene blue agar plates. The biochemical tests were performed by using vitek-2 system (bioMérieux) in Al-Kenday Hospital laboratory for identification of the isolates.

### Extraction of total DNA

Ten samples were selected (Table-1).

**Table 1-** Selected samples.

No.	Source	sample
1	Env.	<i>Apium graveolens</i>
2	Env.	<i>Apium graveolens</i>
3	Env.	<i>Apium graveolens</i>
4	Env.	<i>Apium graveolens</i>
5	Env.	<i>Apium graveolens</i>
6	Clin.	Burn swab
7	Clin.	Urine
8	Clin.	Urine
9	Clin.	Burn swab
10	Clin.	Burn swab

**Environment (Env.), Clinical (Clin.)**

Total DNA of bacterial isolates was extracted by using the G- spin DNA Extraction Kit (iNtRON biotechnology/Korea, cat.no. 17045).

**PCR Amplification and gene sequences**

The *16S rRNA* gene was amplified using the universal primers 27F (5'-AGAGTTTGATCCTGGCTCAG- 3') and 1492R (5'- GGTTACCTTGTTACGACTT- 3') (Table-2) [8], and then 25µl from the PCR reaction, along with 50µl of primers for this gene, were sent to Macrogen company, (USA) to determine the DNA sequencing.

**Table 2-** The specific primers for the 16s RNA gene

Primer	Sequence	Tm (°C)	GC (%)	Product size	Reference
Forward	5'- AGAGTTTGATCCTGGCTCAG- 3'*	54.3	50.0	1250 base pair	Milleret <i>al</i> 2013
Reverse	5'- GGTTACCTTGTTACGACTT- 3'*	49.4	42.1		

**Phylogenetic tree design**

A specific comprehensive bacterial tree was constructed, in which the observed bacterial variants were compared with their neighboring homologous sequences using the NCBI-BLASTn server [9]. Then, the BLAST results of the observed variants were combined and aligned using the Bayesian neighbor -joining tools [10]. A full inclusive tree, including the 10 observed variants and the 164 neighbor sequences, was made and visualized as a polar cladogram using the Figure Tree tool (<http://tree.bio.ed.ac.uk/software/figtree/>). The bacterial sequences of each classified phylogenetic species-group in the comprehensive tree were colored appropriately.

**Results and Discussion**

*Klebsiella* spp. are commonly found in the environment (soil, water, plant surfaces...etc) and human flora. *Klebsiella pneumoniae* is a leading cause of hospital-acquired infections [11]. The difficulties in *Klebsiella* taxonomy are demonstrative and common to other bacterial genera [12]. Comparison of a *K. pneumoniae* strain collected from the ground with a control strain after spaceflight showed genome variations and phenotypic changes and explained the genomic basis of drug resistance [13].

During our study period, a total of 50 *Klebsiella* spp. isolates from various clinical samples and leafy vegetable (*Apium graveolens*) were processed and three *Klebsiella* spp. species were identified, namely *Klebsiella pneumoniae pneumoniae* (Kpp), *Klebsiella pneumoniae ozaenae* (Kpo) and *Klebsiella oxytoca* (Ko) (Table-3). A previous study by Biradar and Roopa [14] recorded from a total of 100 clinical samples, *Klebsiella pneumoniae* was the most common species, followed by *Klebsiella oxytoca*.

**Table 3-** The number of isolated *Klebsiella* species from different clinical specimens and the leafy vegetable *Apium graveolens*

No.	Source	Vitek-2	Sample	PCR result	GenBank code	Sample code
1	Env.	Kpp	<i>Apium graveolens</i>	+	MK371792.1	ITYH1
2	Env.	Kpp	<i>Apium graveolens</i>	+	MK373026.1	ITYH2
3	Env.	Kpp	<i>Apium graveolens</i>	+	MK373029.1	ITYH3
4	Env.	Kpp	<i>Apium graveolens</i>	+	MK373024.1	ITYH4
5	Env.	Kpp	<i>Apium graveolens</i>	+	MK373023.1	ITYH5
6	Clin.	Kpp	Burn swab	+	MK373028.1	ITYH6

7	Clin.	Kpp	Urine	+	MK373027.1	ITYH7
8	Clin.	Kpp	Urine	+	MK373030.1	ITYH8
9	Clin.	Ko	Burn swab	+	MK373025.1	ITYH9
10	Clin.	Kpo	Burn swab	+	MK373031.1	ITYH10

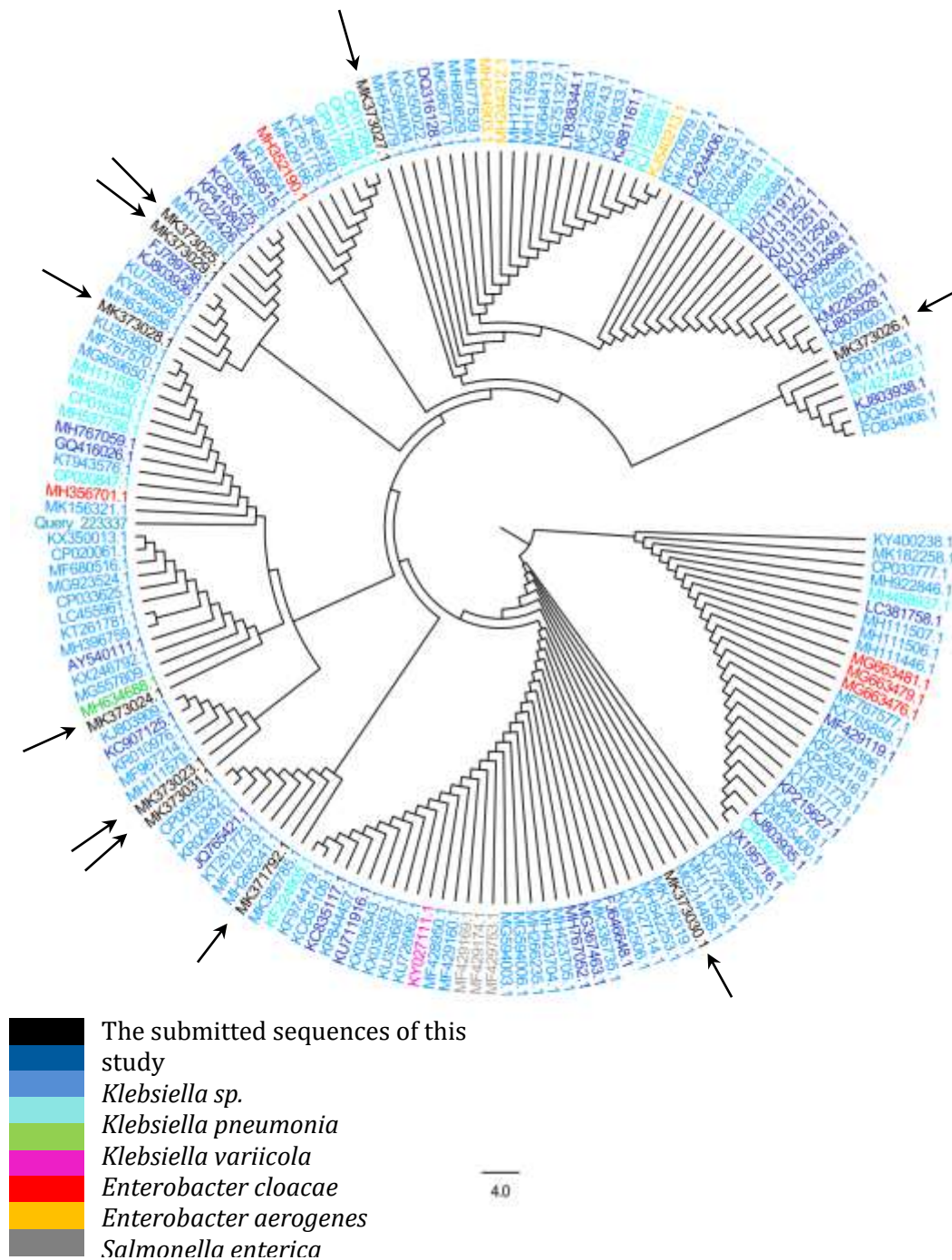
Figure-2 shows the positive results for the identification of *Klebsiella* spp. by using the 16S rRNA gene universal primers 27F and 1492R.



**Figure 2-** PCR product with the band size of 1250 bp. The product was electrophoresed on a 2% agarose gel at 5 volt/cm<sup>2</sup> with 1X TBE buffer for 1:30 hours. N: DNA ladder (100).

Several organisms were incorporated within the present phylogenetic tree, including *Klebsiella* sp, *Klebsiella pneumoniae*, *Klebsiella variicola*, *Enterobacter cloacae*, *Enterobacter aerogenes*, *Salmonella enterica*, *Escherichia coli*, and *Enterobacteriaceae* (Figure-3). The currently constructed comprehensive tree indicated the comparison of *Klebsiella* spp. with the observed 174 scanned variants. All studied variants occupied several positions within the tree. However, almost all the targeted sequences were exactly positioned in an extremely close position to *Klebsiella pneumoniae*, indicating a tendency of the targeted sequences to belong to this species. The presented sequences were found to belong to the *Klebsiella* genus. Notably, one of the targeted sequences, MK373024.1, exhibited a close correlation with *E. coli* sequences. This observed close association could not be eliminated, as *Escherichia* and *Klebsiella* organisms belong to the same family, Enterobacteriaceae. Furthermore, these organisms cohabit with each other in several locations [15]. This notion is applicable for the other species that have close sequence similarity with the targeted *Klebsiella* sequences, such as *Salmonella* and *Enterobacter*, which were found to share high DNA sequence homology with *Klebsiella* species. Nevertheless, the current phylogenetic tree provided conclusive evidence regarding the confirmed identity of the observed variants. Despite the unique characterization of the S-variants that originated from the presence of several substitution mutations, no deviation from *Klebsiella* was revealed (Figure-3). In the presently constructed comprehensive phylogenetic tree, almost all the observed sequence-related species belong to several *Klebsiella* related species. However, these results provide a further indication of the identity of the sequences observed in the studied *Klebsiella* isolates. Thus, this cladogram-based comprehensive tree provided a tool by which the high ability of such selected PCR genetic fragments efficiently identify *Klebsiella* isolates. Moreover, our phylogenetic analysis had a high detection specificity with regard to rRNA-based phylogenetic protocols. Accordingly, the currently observed PCR-sequencing protocols, as well as phylogenetic tools, have indicated the relatively close similarity amongst all analysed *Klebsiella* isolates.

In conclusion, by relying on DNA sequencing followed by phylogenetic tree strategies, all ten studied strains were found to belong to *Klebsiella* isolates. On the other hand, the intra-species genetic distance between the local isolates of the *Klebsiella* spp. was higher up to 4.0 when compared to other isolates of the Enterobacteriaceae genus. Universal primers may be mainly shared among most Enterobacteriaceae family members.



**Figure 3-** The comprehensive phylogenetic tree of the observed *Klebsiella* local isolates. The black arrows refer to the targeted variants, while the other colors refer to the high relative DNA sequences. All the mentioned numbers refer to the GenBank accession no. of each species. The number “4.0” at the bottom of the tree refers to the degree of the scale range among the comprehensive tree categorized organisms.

Biochemical test (vitek-2) results determined the genus, species and subspecies levels for all isolates in this study. On the other hand, the use of the universal primer could only show the genus and species (Table-4).

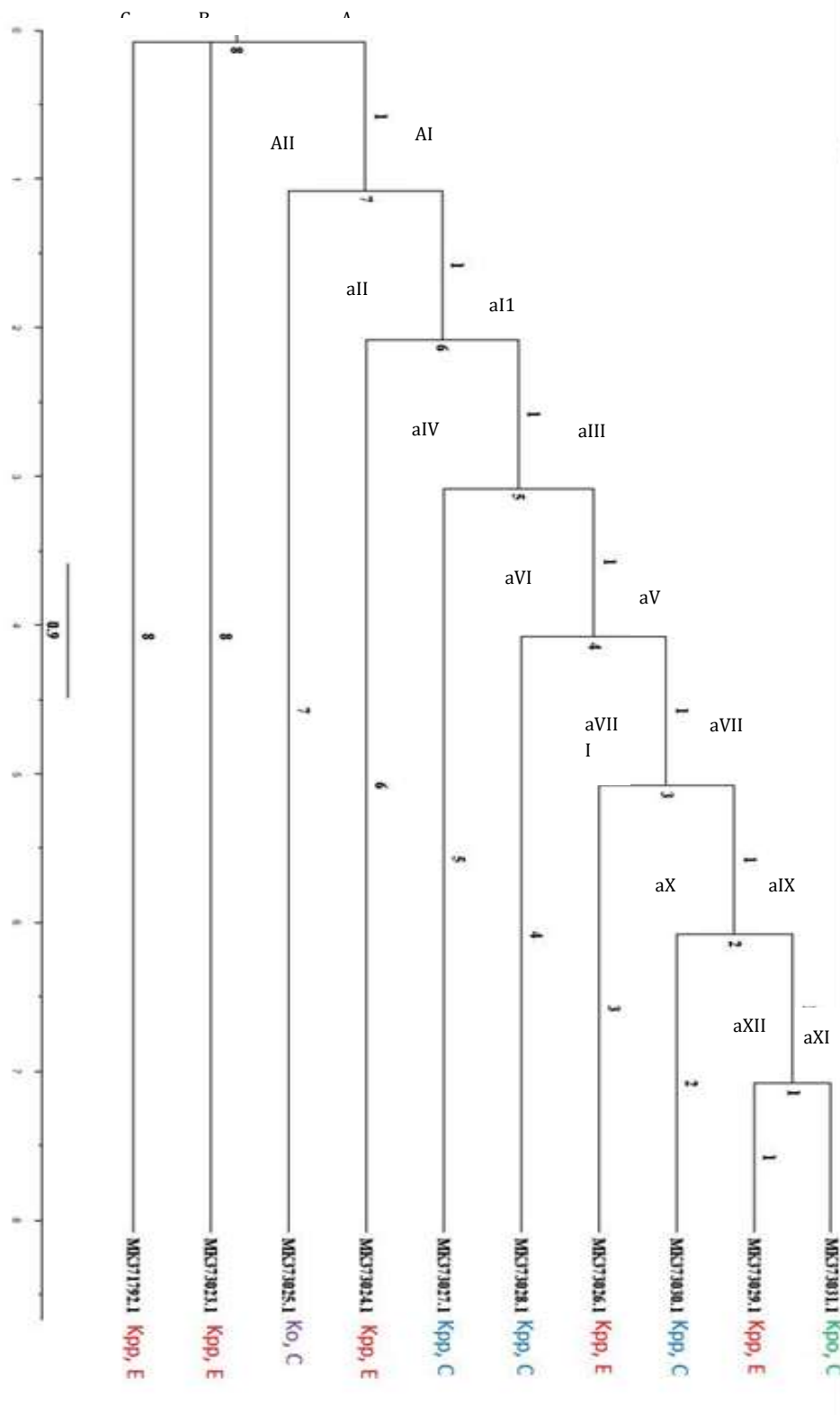
We consider the development of biochemical tests, such as API 20E and the vitek-2 (60 biochemical and enzymatic reactions test), as well as the characteristic culture and structure shape, as more precise for the identification of species, subspecies and variance than using universal primers or certain primers. A previous study by Podschun and Ullmann[16] recorded that biotyping (a

biochemical test, such as the API 20E system) of *Klebsiella* spp. is not very suitable as an epidemiological tool and molecular typing method, as its application to the genus *Klebsiella*, is still in its infancy. However, another study revealed that a suggested selected biochemical test (a test panel consisting of 18 biochemical tests) was able to find one or more positive test results differentiating any species from its closest relative [17]. Siri *et al.* [18] revealed that a biochemical test (API 20E), and gapA-specific PCR tests could identify *Klebsiella* spp. from a water sample, and that a biochemical test could identify *Klebsiella* spp. from a plant (pomegranate) sample [19].

**Table 4-** Species classification of isolates from the genus *Klebsiella* by different taxonomic systems.

No.	GenBank code	vitek-2	16S RNA
1	<i>MK371792.1</i>	Kpp	<i>Klebsiella pneumoniae</i>
2	<i>MK373026.1</i>	Kpp	<i>Klebsiella sp, Klebsiella pneumoniae</i>
3	<i>MK373029.1</i>	Kpp	<i>Klebsiella sp, Klebsiella pneumoniae</i>
4	<i>MK373024.1</i>	Kpp	<i>Klebsiella variicola, Klebsiella pneumoniae</i>
5	<i>MK373023.1</i>	Kpp	<i>Klebsiella pneumoniae</i>
6	<i>MK373028.1</i>	Kpp	<i>Klebsiella pneumoniae</i>
7	<i>MK373027.1</i>	Kpp	<i>Klebsiella pneumoniae</i>
8	<i>MK373030.1</i>	Kpp	<i>Klebsiella pneumoniae</i>
9	<i>MK373025.1</i>	Ko	<i>Klebsiella pneumoniae, Klebsiella sp</i>
10	<i>MK373031.1</i>	Kpo	<i>Klebsiella pneumoniae</i>
	Other shared species		<i>Enterobacter cloacae, Enterobacter aerogenes, Salmonella enterica Escherichia coli</i>

The second tree in Figure-4 shows that the degree of the scale range among the comprehensive tree-categorized organisms was 0.9. The root node ancestor was divided into three nodes A, B and C with the isolates MK371792.1 and MK373023.1 from environmental sample showing highly identical gene sequences. The A node was divided into 7 nodes (14 branches) for 8 isolates. Furthermore, the branch lengths between each node had the value of 1. This result suggests that 8 of the 10 clinical and environmental isolates had the same ancestor. On the other hand, the intra-species genetic distance between the individual isolates of the *Klebsiella* spp. was higher (up to 0.9).



**Figure 4-**A neighbour joining phylogenetic tree of the observed *Klebsiella* local isolates. All the mentioned numbers refer to the GenBank accession no. of each referred species. The number “0.9” at the bottom of the tree refers to the degree of the scale range among the comprehensive tree categorized organisms. The tree is designed using the regular tree layout option of the Figure Tree software.



Based on our data, using the universal primers 27F and 1492R for the identification, detection, comparison, relationships and source of isolates can be considered. Many researchers have stated that other methods, in addition to primers, are needed to precisely identify species. On the other hand, at least three primers (universal primer, species-specific primer, virulence gene primer) were used for detecting clinical and environmental isolates. Examples include the identification of *K. pneumoniae* from chicks by using a specific gene (GyrA) arvirulence genes such as the mucoviscosity gene MagA and the iron uptake system gene Kfu [20]. Another example is the use of the rDNA16S rRNA gene with restriction enzymes (e.g., BanII for identification of the subspecies *K. p. ozaenae* and Sal-I or Taq-I for the identification of *K.p. rhinoscleromatis* and *K.p. p.*) [21]. Identification of the three *K. pneumoniae* phylogenetic groups can be obtained by combining gyrA PCR-RFLP, parC PCR and adonitol fermentation [22]. The universal 16S rRNA bacterial primers 27F and 1392R can be used to identify isolates at the genus-level, with a concordance rate of 96% and a species-level concordance rate of 87.5% [23]. A multiplex PCR consisting of capsular types K1, K2, K5, K54, K20 and K57, which are related to pathogenicity, and rmpA and wcaG as virulence factors, in addition to the 16S–23S RNA, could be used [24]. PCR detection of the rmpA gene (polysaccharide capsule) showed only 87.5% similarity among *Klebsiella* isolated from wound and burn infections [25]. The molecular detection of some capsular polysaccharide genes (*cps*) for *K. pneumoniae* revealed a positive concordance rate between 33.3% and 66.6% [26]. Unknown bacteria isolated from clinical and environmental samples can be used for identification by the universal primers 27F and 1492R [27- 31].

Our results confirms those obtained by Senthilraj et al. [32]. It can be concluded that 16S rRNA sequence-based identification reduces the time by circumventing biochemical tests and increases specificity and accuracy. In addition, clinical and environmental samples can be identified and compared, and the source of microbes can be determined.

### Conclusion

All ten studied strains were found to belong to the genus of *Klebsiella* by using the 16S rRNA gene universal primers 27F and 1492R for sequencing. These primers were also used to demonstrate the relationship between clinical and environmental isolates. The phylogenetic tree described that the root node's ancestor was divided into three nodes (A, B and C), using Boost strap 4.0.

### Acknowledgments

The authors are thankful to the administrator of Al-Kenday Hospital in Baghdad for providing the opportunity to collect the samples at their facilities.

### References

1. Patel, J. B. **2001**. 16S rRNA gene sequencing for bacterial pathogen identification in the clinical laboratory. *Molecular Diagnosis*, **6**: 313-321.
2. Conlan, S., Kong H. H. and Segre, J. A. **2012**. Species-level analysis of DNA sequence data from the NIH Human Microbiome Project. *PLOS ONE*, **7**: e47075 10.1371/journal.pone.0047075.
3. Chakravorty, S., Helb D., Burday, M., Connell, N. and Alland D. **2007**. A detailed analysis of 16S ribosomal RNA gene segments for the diagnosis of pathogenic bacteria. *Journal of Microbiological Methods*, **69**(2): 330–339.
4. Barbut, F., Monot, M., Rousseau, A., Cavelot, S. and Simon, T. **2011**. Rapid diagnosis of *Clostridium difficile* infection by multiplex real-time PCR. *European journal of clinical microbiology and infectious diseases*, **30**: 1279–1285.
5. Brenner, D.J., Krieg, N. R., Staley, J. T. and Garrity, G. M. **2005**. *Bergey's Manual of Systematic Bacteriology, Volume two The Proteobacteria Part B The Gammaproteobacteria*. Publisher Springer US.
6. CDC (Centers for Disease Control and Prevention) *Klebsiella pneumoniae* in Healthcare Settings. <https://www.cdc.gov/HAI/organisms/klebsiella/klebsiella.html>
7. Runcharoen, C., Moradigaravand, D. and Blane, B. **2017**. Whole genome sequencing reveals high resolution epidemiological links between clinical and environmental *Klebsiella pneumoniae*. *Genome Medicine*, **9**:6 DOI 10.1186/s13073-017-0397-1.
8. Miller, C.S., Handley, K. M., Wrighton, K. C., Frischkorn, K. R., Thomas, B. C. and BanfieldJ. F. **2013**. Short-Read Assembly of Full-Length 16S Amplicons Reveals Bacterial Diversity in Subsurface Sediments. *PLoS ONE* **8**(2): e56018. doi:10.1371.

9. Zhang, Z., Schwartz, S., Wagner, L. and Miller, W. **2000**. A greedy algorithm for aligning DNA sequences. *Journal of Computational Biology*, **7**(1-2): 203-14.
10. Ram R. and Chetty M. . **2009**. *MCMC Based Bayesian Inference for Modeling Gene Networks*. Vol. 5780/2009, Pattern Recognition in Bioinformatics edn: Springer Berlin/Heidelberg.
11. Jones, RN. **2010**. Microbial etiologies of hospital-acquired bacterial pneumonia and ventilator-associated bacterial pneumonia. *Clinical infectious diseases*, **51**(Suppl 1): S81–S87.
12. Martínez, J., Martínez, L., Rosenblueth, M., Jesús Silva, J. and Martínez-Romero E. **2004**. How are gene sequence analyses modifying bacterial taxonomy? The case of *Klebsiella*. *International Microbiology*, **7**: 261-268.
13. Guo, Y., Li, Y., Su, L., Chang, D., Liu, W., Wang, T., Yuan, Y, Fang, X., Wang, J., Li, T., Fang, C., Wenkui Dai, W. and Liu, C. **2014**. Comparative genomic analysis of *Klebsiella pneumoniae* (LCT-KP214) and a mutant strain (LCT-KP289) obtained after spaceflight. *BMC Genomics*, **15**: 589.
14. Biradar, S. and Roopa, C. **2015**. Isolation and Antibiogram of *Klebsiella* species from Various Clinical Specimens. *International Journal of Current Microbiology and Applied Sciences*, **4**(9): 991-995.
15. McGuinn, M., Hershov, R. C. and Janda, W. M. **2009**. *Escherichia coli* and *Klebsiella pneumoniae* carbapenemase in long-term care facility, Illinois, USA. *Emerging infectious diseases*, **15**(6): 988-989.
16. Podschun, R. and Ullmann, U. **1998**. *Klebsiella* spp. as Nosocomial Pathogens: Epidemiology, Taxonomy, Typing Methods, and Pathogenicity Factors. *Clinical microbiology reviews*, **11**(4): 589–603.
17. Hansen, D.S., Hazel, M. Aucken, H.M., Titi Abiola, T. and Podschun R. **2004**. Recommended Test Panel for Differentiation of *Klebsiella* Species on the Basis of a Trilateral Interlaboratory Evaluation of 18 Biochemical Tests. *Journal of clinical microbiology*, **42**(8): 3665–3669.
18. Siri, G.P., Sithabe, N.P. and Ateba, C.N. **2011**. Identification of *Klebsiella* species isolated from Modimola dam (Mafikeng) North West Province – South Africa. *African Journal of Microbiology Research*, **5**(23): 3958-3963.
19. Ajayasree, T. S. and Borkar, S. G. **2018**. Differentiation tests between the plant pathogenic bacteria *Klebsiella pneumoniae* and *K. variicola*. *Journal of Applied Biotechnology and Bioengineering*, **5**(4): 237–240.
20. Aly, M. M., Khalil, S. and Metwaly, A. **2014**. Isolation and Molecular Identification of *Klebsiella* Microbe Isolated from Chicks Alexandria *Journal of Veterinary Sciences*, **43**: 97-103.
21. Arenas, N. E., Polanco, J. C., Coronado, S. M., Durango, C. J. and Gómez, A. **2009**. Design of a molecular method for subspecies specific identification of *Klebsiella pneumoniae* by using the 16S ribosomal subunit gene. *Colombia Medica*, **40**(2): 194-201.
22. Brisse, S., van Himbergen T., Kusters K., and Verhoef J. **2004**. Development of a rapid identification method for *Klebsiella pneumoniae* phylogenetic groups and analysis of 420 clinical isolates. *European Society of Clinical Microbiology and Infectious Diseases*, **10**: 922–950.
23. Srinivasan, R., Karaoz, U., Volegova, M., MacKichan, J., Kato-Maeda, M., Miller, S., Nadarajan, R., Brodie, E.L., Susan, V. and Lynch, S.V. **2015**. Use of 16S rRNA Gene for Identification of a Broad Range of Clinically Relevant Bacterial Pathogens. *PLOS ONE*, Feb 6; **10**(2): e0117617. doi: 10.1371.
24. Turton, J. F., Perry, C., Elgohari, S. and Hampton, C. V. **2010**. PCR characterization and typing of *Klebsiella pneumoniae* using capsular type-specific, variable number tandem repeat and virulence gene targets. *Journal of Medical Microbiology*, **59**: 541–547.
25. Al-Rediany, R. Sh. and Al- Muhanna, A. Sh. **2013**. PCR detection of *rmpA* gene among *Klebsiella* isolated from wound and burn infections. *Magazin of Al-Kufa University for Biology*, **5** (2): 1-6.
26. Abd Al-Rhman, R. M. and Al-Aubydi, M. A. **2015**. Determination the Relationship between Some genetic Aspects with the Capsule Formation for Pathogenic *Klebsiella pneumoniae* Serotypes K1&K2. *Iraqi Journal of Science*, **56**(2B): 1385-1393.

27. Galkiewicz, J. P. and Kellogg, C. A. **2008**. Cross-Kingdom Amplification Using Bacteria-Specific Primers: Complications for Studies of Coral Microbial Ecology. *Applied and Environmental microbiology*, **74**(24): 7828–7831.
28. Frank, J. A., Reich, C. I., Sharma, S., Weisbaum, J. S., Wilson, B. A. and Olsen, G. J. **2008**. Critical Evaluation of Two Primers Commonly Used for Amplification of Bacterial 16S rRNA Genes. *Applied and Environmental microbiology*, **74**(8): 2461–2470.
29. Fredriksson, N. J., Hermansson, M. and Wilén, B-M. **2013**. The Choice of PCR Primers Has Great Impact on Assessments of Bacterial Community Diversity and Dynamics in a Wastewater Treatment Plant. *PLoS ONE* **8**(10): e76431. doi:10.1371.
30. Kathleen, M. M., Samuel, L., Felecia, C., Ng K. H., Lesley M. B. and Kasing A. **2014**. (GTG) - PCR analysis and 16S rRNA sequencing of bacteria from Sarawak aquaculture environment. *International Food Research Journal*, **21**(3): 915-920.
31. Ibrahim, I. AJ. **2016**. 16S rRNA Gene Sequencing for Identification of Some Enterobacteriaceae Species Isolated from Tigris River. *Al-Mustansiriyah Journal of Science*, **27**(3):13-16.
32. Senthilraj,R., Prasad, G. S. and Janakiraman, K. **2016**. Sequence-based identification of microbial contaminants in nonparenteral products. *Brazilian Journal of Pharmaceutical Sciences*, **52**(2): 329-336.